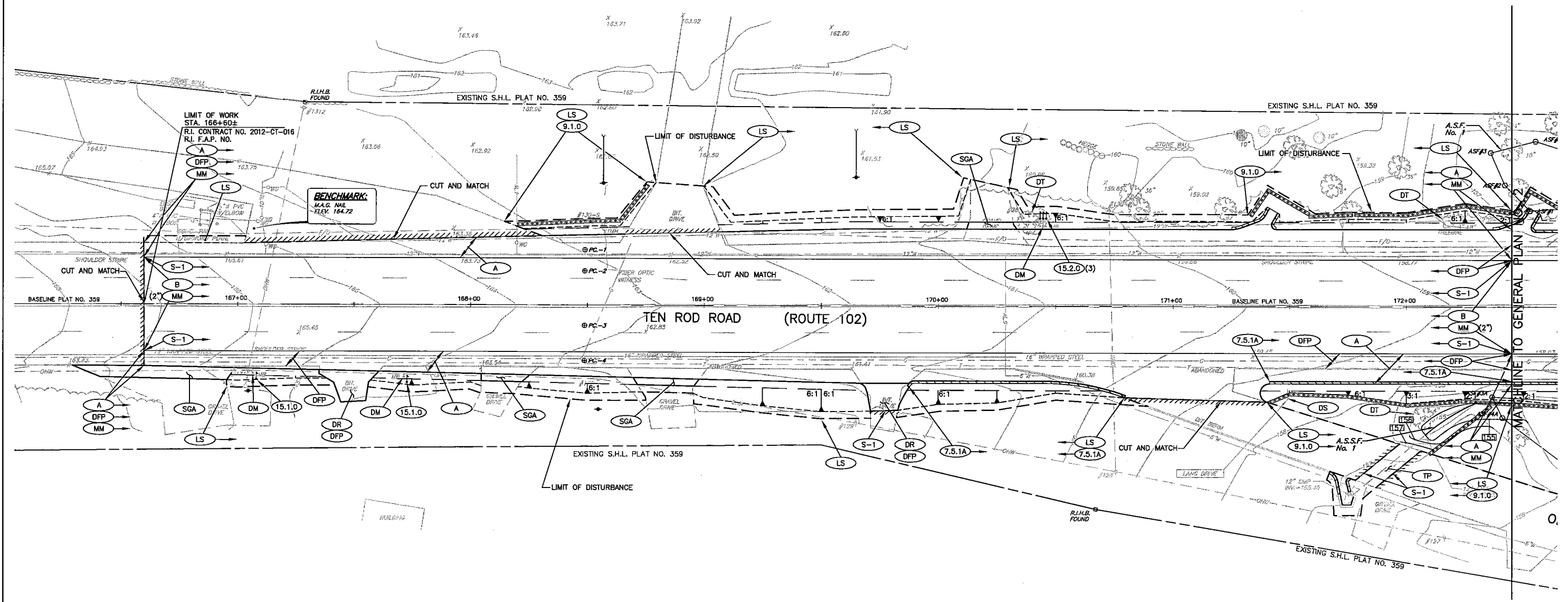
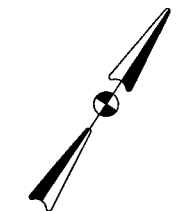


FED. ROAD DIV. NO.	STATE	FEDERAL AID PROJECT NO.	FISCAL YEAR	SHEET NO.	TOTAL SHEETS
1	RI			7	35



MATCH TO GENERAL PLAN NO. 1

REVISIONS		
NO.	DATE	BY

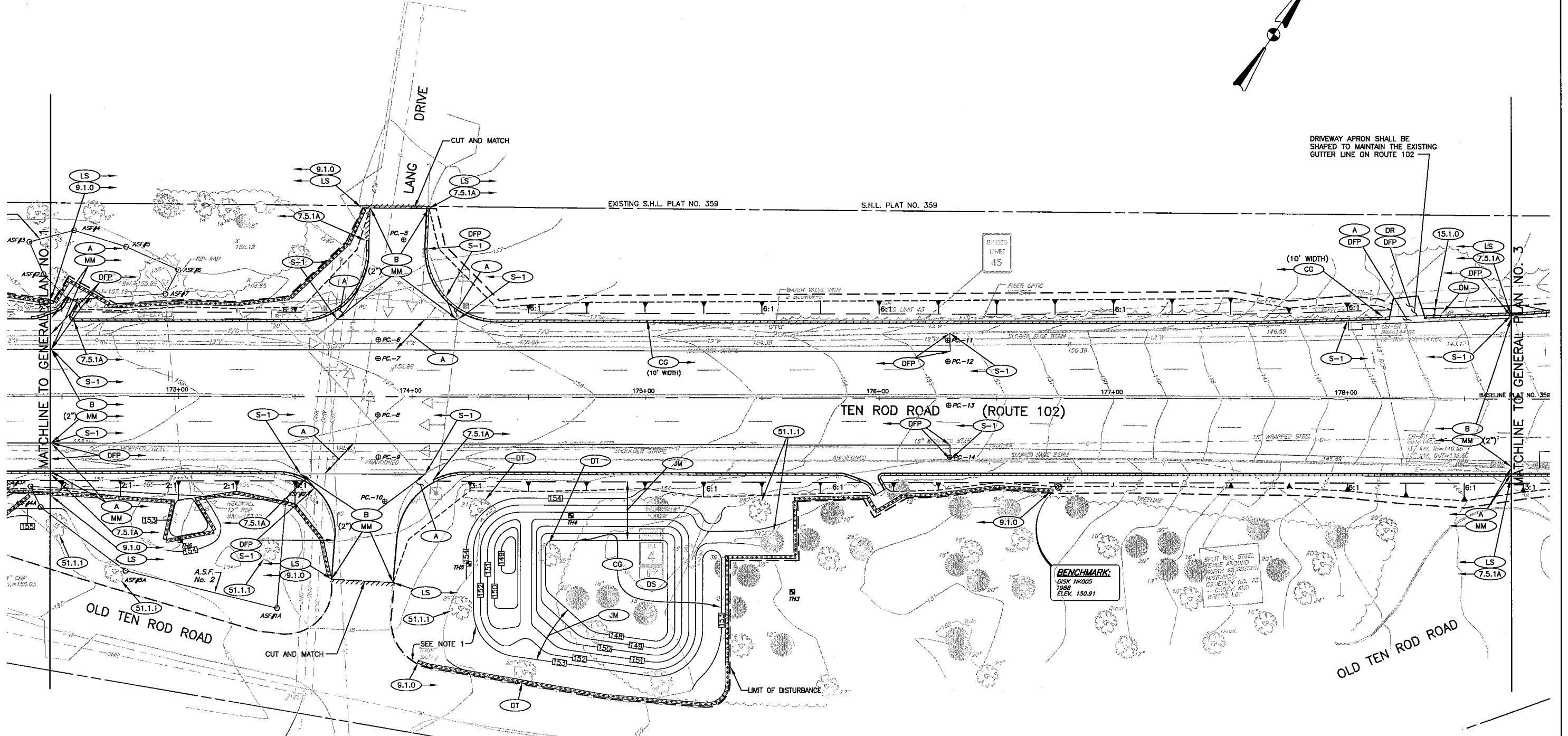
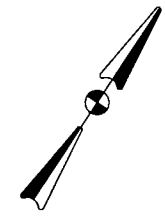
RHODE ISLAND
DEPARTMENT OF TRANSPORTATION
TRAFFIC SIGNAL INSTALLATIONS
STATE TRAFFIC COMMISSION
ROUTE 102 LEFT TURN LANES
 NORTH KINGSTOWN RHODE ISLAND

TEN ROD ROAD (ROUTE 102)
GENERAL
 PLAN NO. 1

CHECKED BY _____ DATE _____ SCALE 1" = 20'

CROSSMAN ENGINEERING
 a division of Crossman Corporation
 151 Centerville Road | Warwick, Rhode Island 02886

FED. ROAD DIV. NO.	STATE	FEDERAL AID PROJECT NO.	FISCAL YEAR	SHEET NO.	TOTAL SHEETS
1	RI			8	35



SPEED LIMIT 45

DRIVEWAY APRON SHALL BE SHAPED TO MAINTAIN THE EXISTING GUTTER LINE ON ROUTE 102

BENCHMARK:
DISK NK005
1989
ELEV. 150.91

BENCHMARK:
NAIL FOUND 1" UP
ON POLE #126
ELEV. 155.76

- NOTES:**
- LOAM AND SEED SHALL BE PLACED ON ALL DISTURBED AREAS, UNLESS NOTED OTHERWISE.
 - NO PARKING, DRIVING, OR STORAGE OF CONSTRUCTION MATERIALS IS TO OCCUR WITHIN THE DRIP LINES OF TREES.

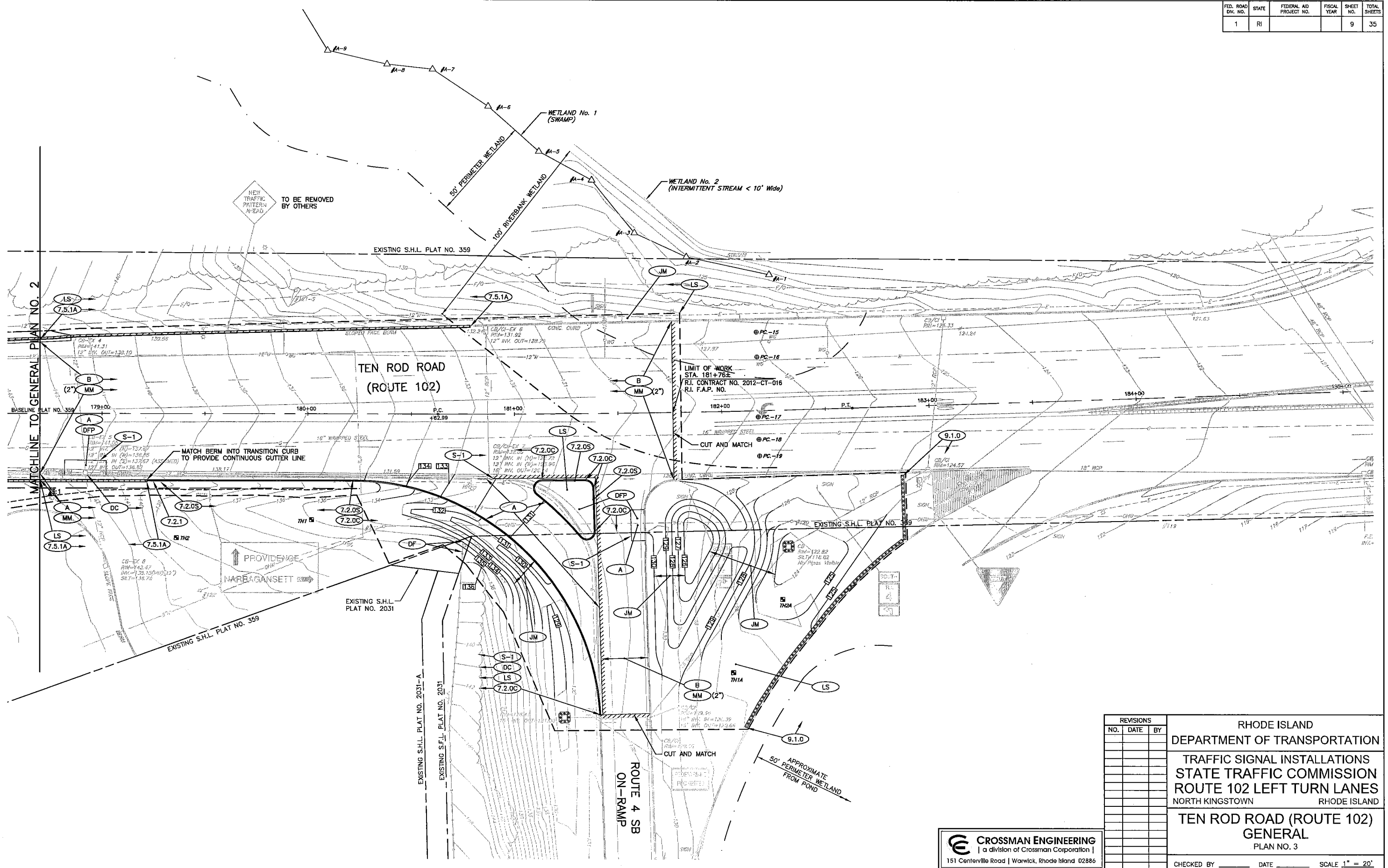
REVISIONS		
NO.	DATE	BY

RHODE ISLAND
DEPARTMENT OF TRANSPORTATION
TRAFFIC SIGNAL INSTALLATIONS
STATE TRAFFIC COMMISSION
ROUTE 102 LEFT TURN LANES
NORTH KINGSTOWN RHODE ISLAND
TEN ROD ROAD (ROUTE 102)
GENERAL
PLAN NO. 2

CROSSMAN ENGINEERING
a division of Crossman Corporation |
151 Centerville Road | Warwick, Rhode Island 02886

CHECKED BY _____ DATE _____ SCALE 1" = 20'

FED. ROAD DIV. NO.	STATE	FEDERAL AID PROJECT NO.	FISCAL YEAR	SHEET NO.	TOTAL SHEETS
1	RI			9	35



RHODE ISLAND
 DEPARTMENT OF TRANSPORTATION
 TRAFFIC SIGNAL INSTALLATIONS
 STATE TRAFFIC COMMISSION
 ROUTE 102 LEFT TURN LANES
 NORTH KINGSTOWN RHODE ISLAND
**TEN ROD ROAD (ROUTE 102)
 GENERAL**
 PLAN NO. 3

REVISIONS		
NO.	DATE	BY

CROSSMAN ENGINEERING
 [a division of Crossman Corporation]
 151 Center/Ille Road | Warwick, Rhode Island 02886

CHECKED BY _____ DATE _____ SCALE 1" = 20'